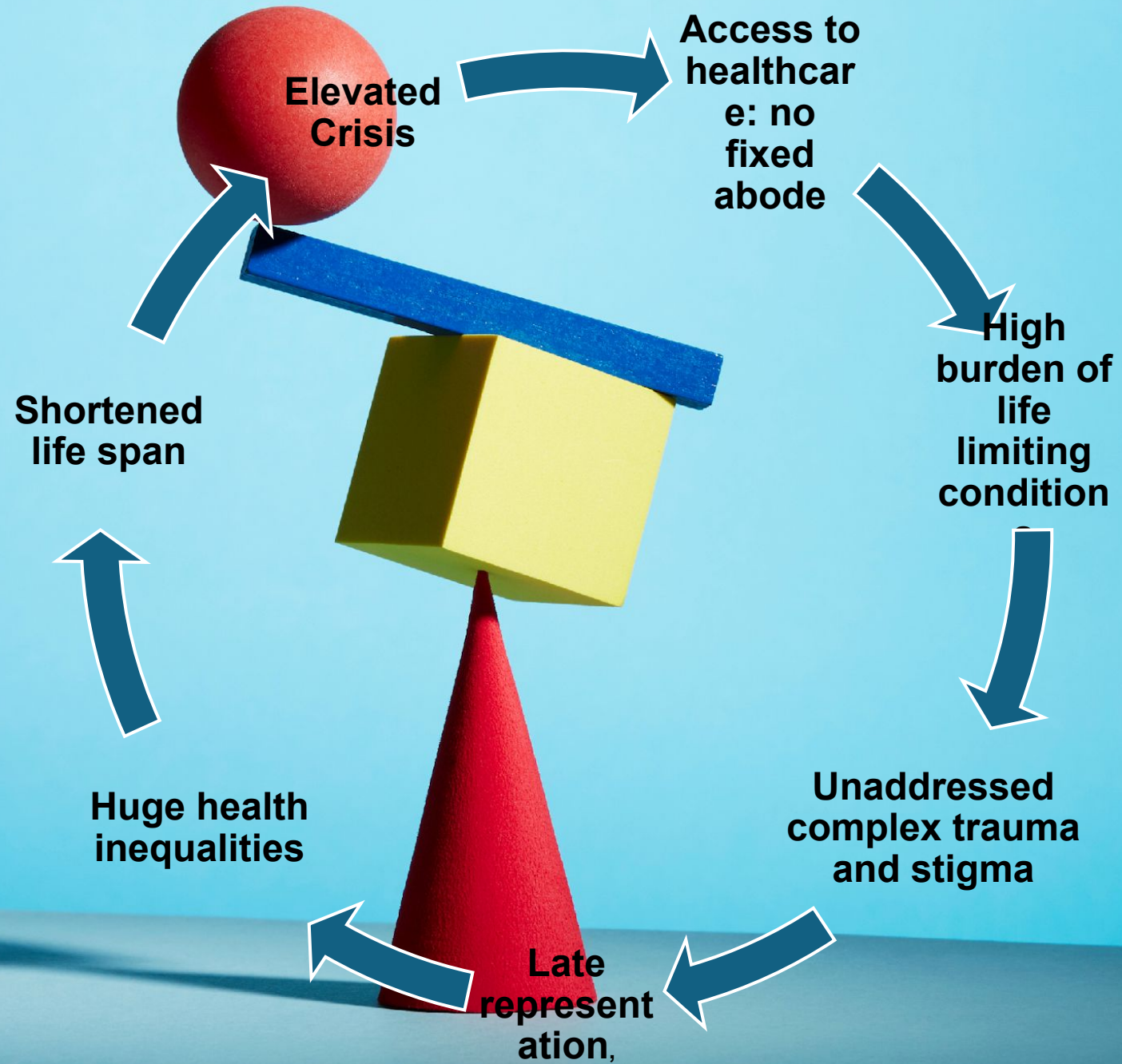


The background of the slide is a dense pattern of numerous hands in various colors (red, blue, green, yellow, purple) reaching out from all directions. The hands are stylized and appear to be reaching towards the center of the frame.

Reaching Out In Our Community

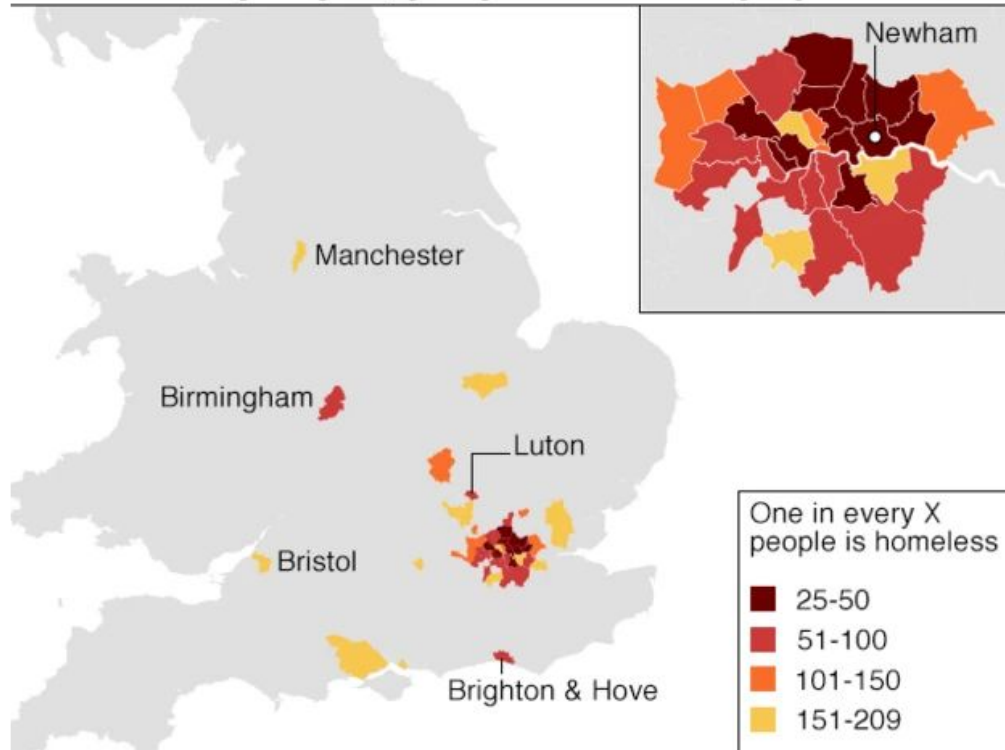
Mark Pedder

Inclusive Health Palliative Nurse Specialist



Our Homeless Community

The 50 local authorities with the most homeless people, proportional to population

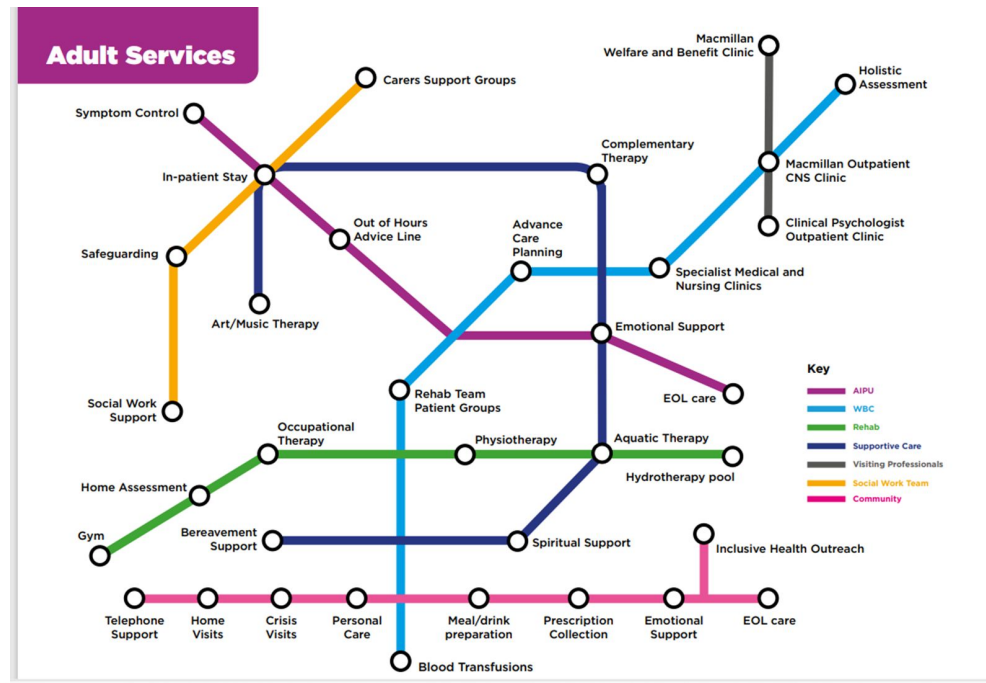


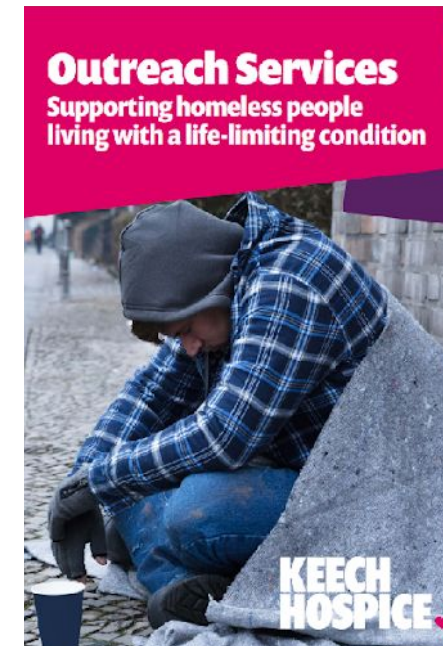
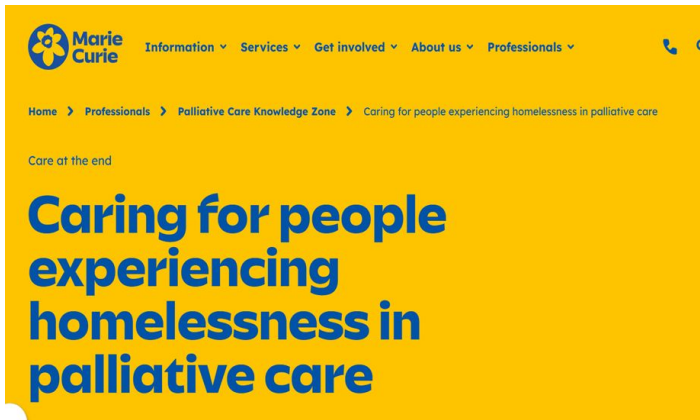
Source: Shelter, compiled from official statistics on temporary accommodation (Q2 2017) and rough sleeping (Autumn 2016).

BBC

- At least 354,000 people homeless in England
- Luton has one in 57 homeless people, approximately 3,840 and Bedford and Central Bedfordshire with at least 1,724.
- The homeless community dying 30 years earlier than the general population
- Homelessness has increased by 20% in the last 12 months in the East of England

(Shelter, 2024)





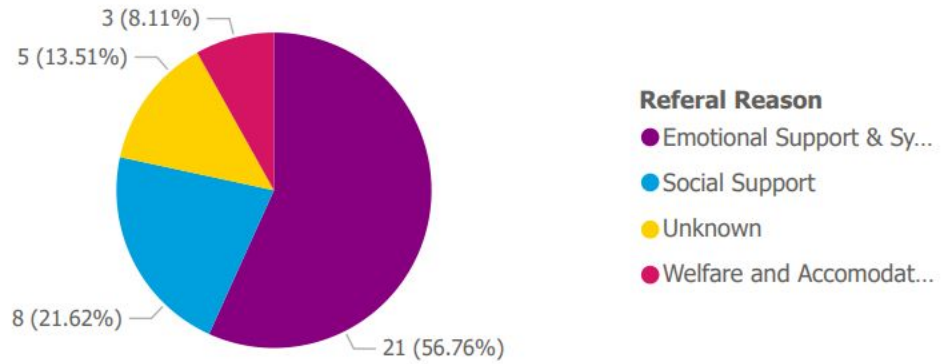
- **Outreach Nurse led service supporting homeless people living with a life-limiting condition**
- **Working in partnership with hostels, GP's, drug & alcohol teams, hospice, community teams & hospital**
- **Care provided where people feel safe**





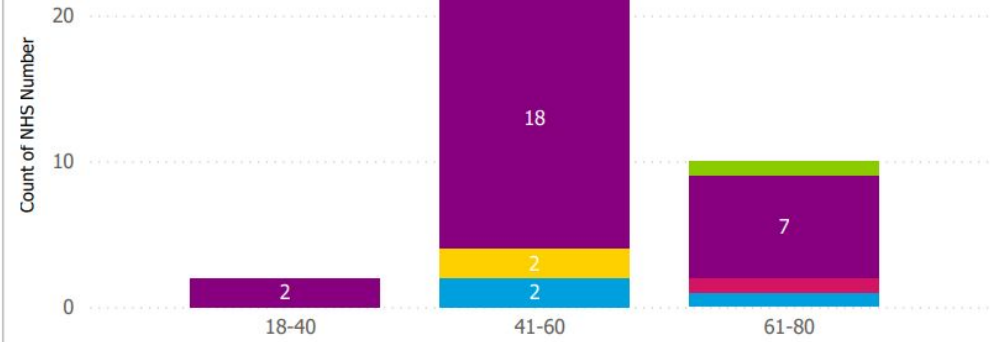
KEECH
HOSPICE.

Patient Count by Reason for referral

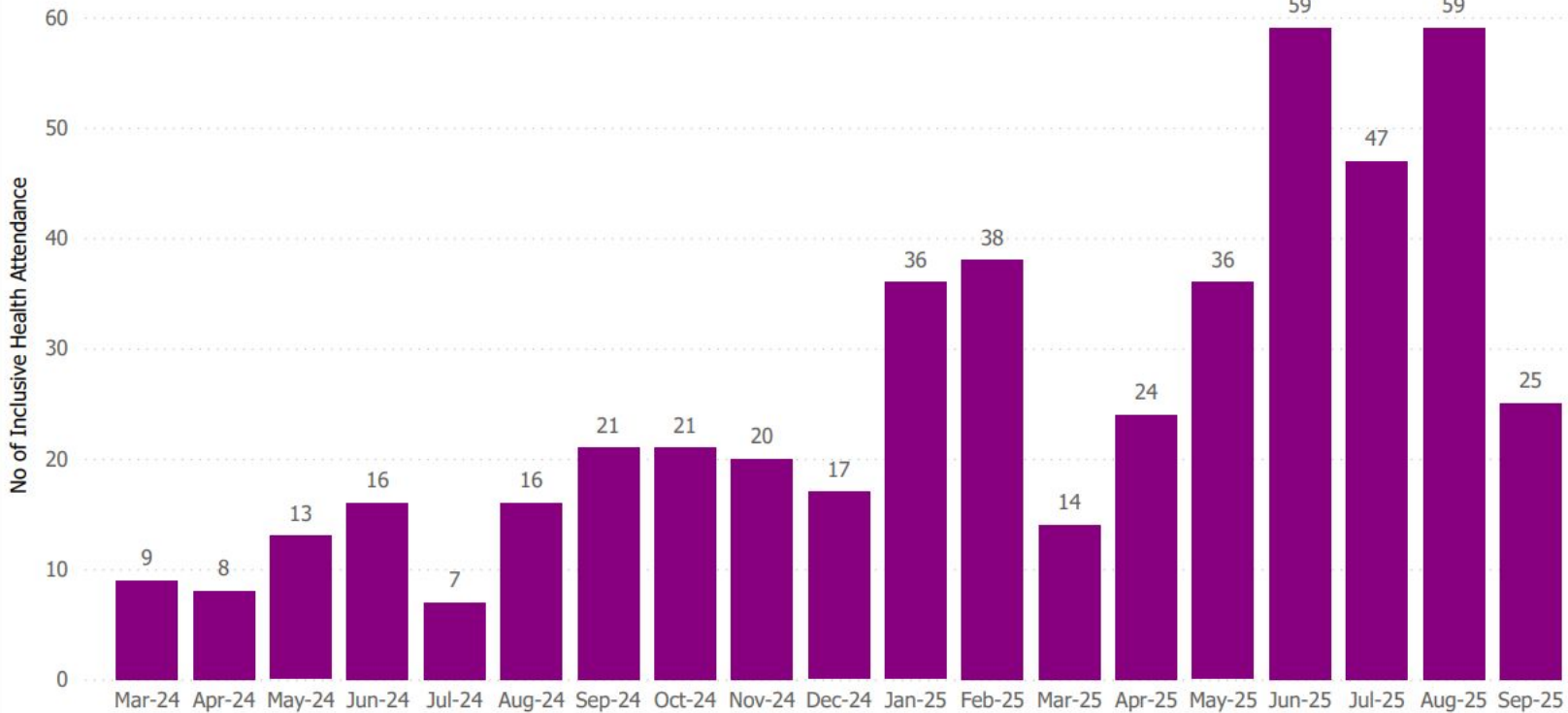


Patient Count by Age Group and Location

Location ● Bedford ● Harpenden ● Leighton Buzzard ● Luton ● Stevenage



Monthly Attendance for Inclusive Health Intervention(Combine)



Grants

“1 in 64”: the challenge facing one UK hospice

09 December 2024



Nursing Times 'Any discussion on the future of nursing must include nurses' STEVE FORD, EDITOR

HOME TOPICS CPD STUDENTS NEWLY REGISTERED ARCHIVE ASK NURSING TIMES EVENTS CAREERS JOBS SUBSCRIBE

HOT TOPICS ANATOMY CORE SKILLS LEADERSHIP CHILDREN'S NURSING EDUCATION HOSPITAL NURSING

END-OF-LIFE AND PALLIATIVE CARE

Developing a palliative care service for the homeless community

18 JUNE, 2025 | BY MARK PEDDER



A hospice developed a service that provides end-of-life care for homeless people in Luton by addressing accessibility barriers and stigma

RECOMMENDED ARTICLES

- Palliative medications: what works in practice for symptom control?
- How to adopt a rehabilitative palliative care approach
- Palliative medications: what works in practice for symptom control?
- Grief, loss and adjustment for people with dementia

SPONSOR FOCUS >>

Shaping inclusive healthcare: study learning



'Fit for the Future' - The NHS 10 Year Health Plan for England

- **1. Community-Based End-of-Life Care**
 - The plan supports **delivering palliative care closer to home**, reducing hospital admissions.
 - Emphasis on **24/7 community services** to support people in their preferred place of care.
- **2. Personalised and Compassionate Support**
- Aligns with the **Ambitions for Palliative and End of Life Care** framework:
 - **Individualised care** based on what matters most to the person.
 - **Support for families and carers** throughout and after bereavement.
 - **Cultural sensitivity** and equitable access for all communities
- **3. Workforce Training**
- Investment in **training NHS staff** in:
 - Advanced care planning
 - Symptom management
 - Compassionate communication
- **4. Digital Integration**
 - Use of shared digital care records to:
 - Ensure continuity across settings (hospital, hospice, home)
 - Enable real-time updates for all care providers
- **5. Equity and Access**
 - Focus on reducing disparities in palliative care access:
 - For people with non-cancer conditions
 - For underserved and minority communities
- **6. System Coordination**
 - Encourages Integrated Care Systems (ICSs) to:
 - Embed palliative care in local health strategies
 - Collaborate with hospices, charities, and social care



**KEECH
HOSPICE.**

Outreach Services

Supporting homeless people
living with a life-limiting condition

**For more information
contact Mark Pedder**

 **07760 236895**

 **mark.pedder@nhs.net**

**KEECH
HOSPICE.** 

To make a referral:

- self refer via our website
www.keech.org.uk/refer/
- speak to a member of your care
team or your health professional
- phone My Care Co-ordination
team on **0808 180 7788**