

# Think Family & Paediatric Health Offer in Initial Accommodation Settings across Lambeth and Southwark

Sandra Oritsesan (Specialist Health Visitor)

Karin Sundkvist (Nurse Practitioner)

# Health Inclusion Team, Guys St Thomas' NHS Trust

## Health inclusion team

### Blood borne virus service

Health assessments, blood testing, vaccinations, referral to specialist services and advice on drugs and alcohol in addiction centres and hostels.

### Refugee health service

Healthcare, occupational therapy and GP services for refugees, asylum seekers and undocumented migrants in hostels, day centres + medical centre.

### Homeless health service

Primary healthcare services in hostels and day centres to people experiencing homelessness across Lambeth, Southwark and Lewisham.

### High intensity user project

Assertive, supportive, non-medical outreach to reduce A&E attendances and non-elective admissions of high intensity users of emergency departments.

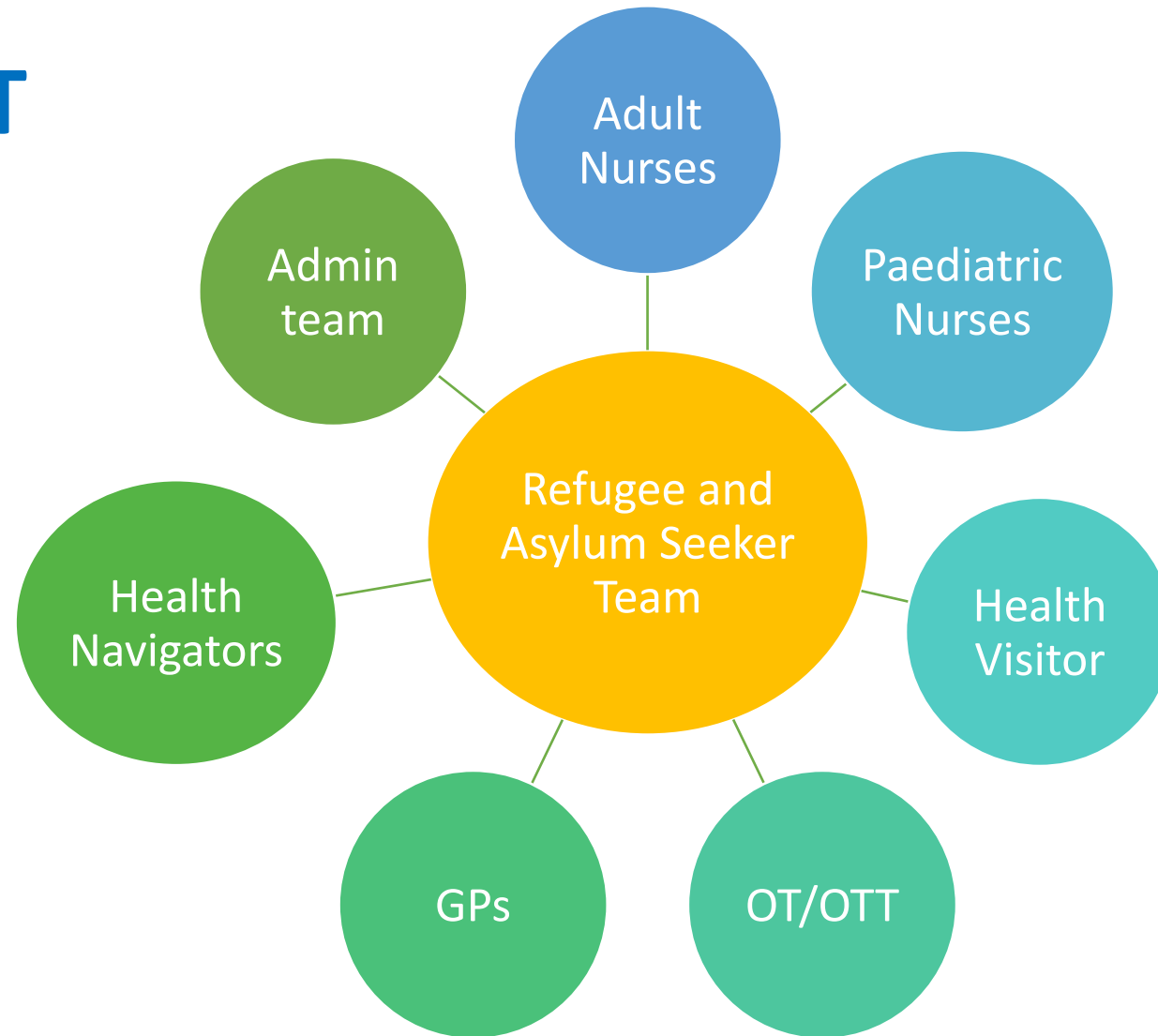
South London based community health team

Core IA

Clinical in a Medical Centre/Supporting day centres

6 IAC Hotels

# RASS MDT



# Section 95 Asylum Support

- Housing
- Financial support via Aspen card - £9.95 per person in catered IA
- Maternity provision (plus grant £300)
- Education up to age 17
- Free school meals
- 15 hours of free childcare from 2 years
- NHS care via HC2 certificate

## Initial Accommodation

### Provisions:

- Toiletries and laundry service
- Breakfast, lunch, dinner, snacks, drinks

### (Facilities):

- Some communal space and canteen
- Garden/outside space

# BABY AND CHILDREN PROVISIONS



## PLEASE ASK AT RECEPTION

बरिधा बरवे रमैधमन ते पुढे

フロントでお問い合わせください

Пожалуйста, спросите на стойке регистрации

অভ্যর্থনা জিজ্ঞাসা করুন

Por favor, pergunte na recepção

لأبقتسأل أبتكم يف لأس كل لصف نم

कृपया रसैपूशन पर पूछें

Consultar en recepción

Qǐng zài jiēdài chū xúnwèn



MOSES BASKET  
BASKET STAND  
MATTRESS  
BLANKET

0 - 6  
Months



FORMULA  
STERILISER  
KETTLE  
BOTTLES  
BOTTLE BRUSH

0 - 12  
Months



HIGH CHAIR  
BABY FOOD  
BABY SNACKS

4 - 12  
Months



BED  
PILLOW  
DUVET  
DUVET COVER

24 +  
Months



WIPES  
PADS  
NAPPIES (ALL SIZE)  
NAPPY BAGS

0 - 36  
Months



BABY BATH  
BABY WASH  
BABY CREAM

0 - 36  
Months



COT  
MATTRESS  
BLANKET

6 - 24  
Months



Available upon request.

Any complaints, please call Migrant Help.

# IAC Hotel Food Provisions

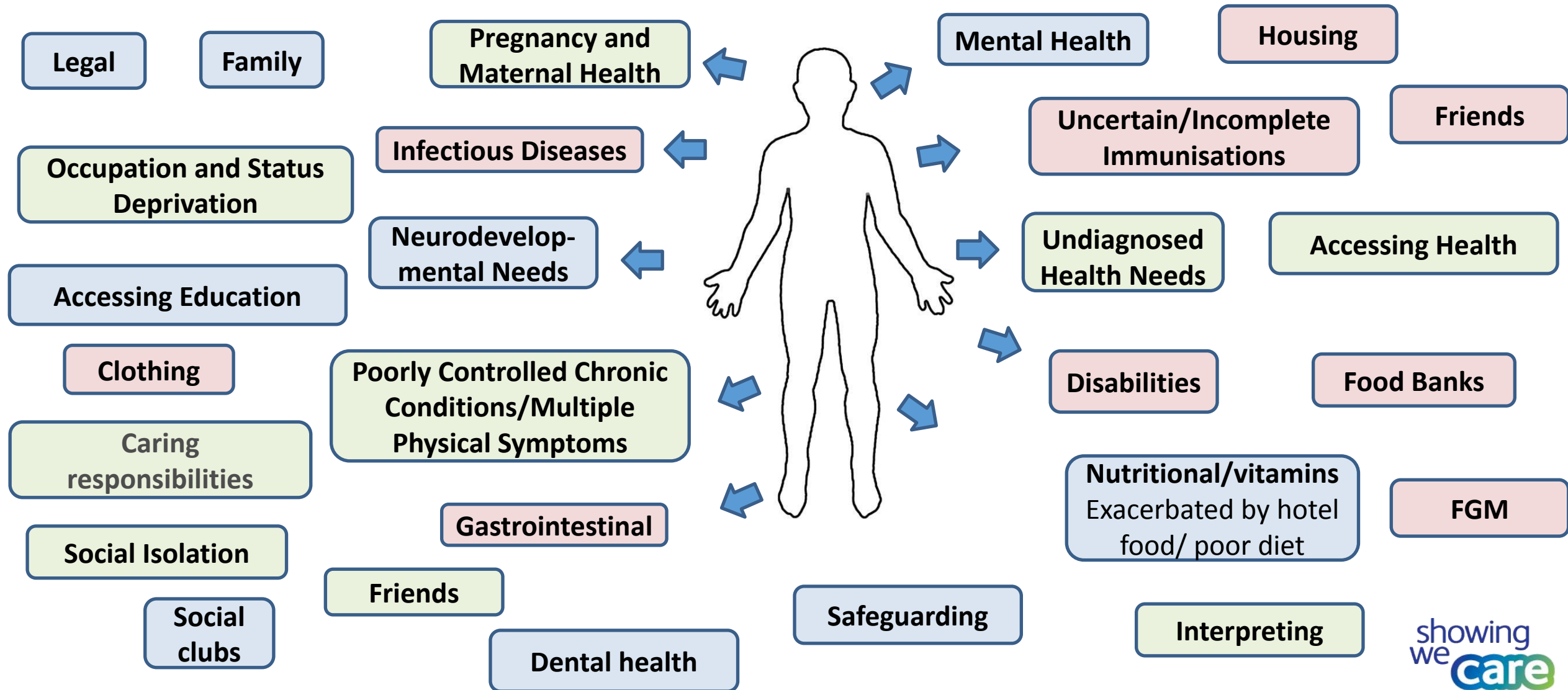
- External providers, different across the sites
- Rotating menus
- 3 meals per day.
- Snacks:
  - One piece of fruit and a biscuit.
  - Pregnant/breastfeeding women and children are entitled to one piece of fruit, dried fruit and yoghurt.
  - Children are entitled to unlimited milk
- Specialist menus for medical dietary requirement
- Community services/resources



# RASS Children's Health Service Offer

- Health screening incl mental health and asymptomatic blood screening
- Provide advice re: NHS entitlements, support with GP appointments
- Referrals to health, wellbeing and education services
- Safeguarding
- Vaccination campaigns and vaccination of individuals with uncertain or incomplete immunisation status
- Outreach clinics
- Outbreak management
- The provision for under 5's offer differs slightly in IAC hotels and core IA

# Health, social and welfare needs



# Meeting the needs

1. Think family - investigation outcomes, vaccination, maternity, safeguarding
2. Trauma informed approach to create a safe space but bare in mind that the children might have different priorities
3. Let children be children

# 10 year plan

- **From hospital to community:** Particularly beneficial in paediatrics, where the network is typically smaller, making it easier for parents to ensure the safety of siblings. It also allows for more efficient delivery of mental health services being closer to the patient's reality.
- **From analogue to digital:** AI will transform interpreting? Working closely with charities to provide equipment, devices as well as improving digital literacy.
- **From sickness to prevention:** Early intervention with specialised teams closer to the patients building trust. Immunisations, mental health, social and physical activities.

# Resources

Doctors of the World

<https://www.doctorsoftheworld.org.uk/translated-health-information/>

Translated health information

British Red Cross

<https://www.redcross.org.uk/get-help/get-help-as-a-refugee>

Practical support and reunion support for families

Refugee Council

<https://refugeecouncil.org.uk/resource-category/guides-for-refugees/>

Wide range of support services including psychological support and advocacy

<https://www.refugeecouncil.org.uk/get-support/services/therapeutic-wellbeing-resources/>

Communication cards, Which NHS service do I need? GP registration rights.

Migrant Help

[www.migranthelpuk.org/](http://www.migranthelpuk.org/)

Advice, policy guidance, advocacy, asylum support

NHS Health and Safeguarding Refugees and people Seeking asylum – Rapid read (2)

<https://thrivedn.co.uk/wp-content/uploads/2022/04/Health-Safeguarding-Migrant-Refugees-and-People-Seeking-Asylum-Rapid-Read-March-22-one-page-v0.8.pdf>

Migrant Health Guide:

[Migrant health guide - GOV.UK \(www.gov.uk\)](https://www.gov.uk/migrant-health-guide)

Advice and guidance on the health needs of migrant patients for healthcare practitioners.

Project 17

[www.project17.org.uk](http://www.project17.org.uk)

Advice & support for migrant families with no recourse to public funds